

TENDER TECHNICAL SPECIFICATION OF THE FURNITURE

A) Furnishing items:

S. No.	Item Name	Quantity	Particulars/ Specifications
1.	Double Bed with Mattress and Pillow	02 Nos.	<p>Size: approximately 6'5" X 7' X 2'6"; Thickness: 36 mm; Height of the headboard should be minimum 85 cm from ground; Imperial teak finish; Termite and borer resistant material; Material: MDF; (a sample design for bed is attached for representation purpose only)</p> <p>Mattress as per size of the bed; Approx3" thick; The mattress should have anti-microbial fabric; bonded foam; reversible; The mattress should be provided with at least five years warranty;</p> <p>Pillow: Approx27"X18" size; shall have 100% breathable cotton fabric with siliconised hollow fibre. Brand: Sleep-well, Kurl-on, or equivalent;</p>
2.	Single bed with Mattress and Pillow	08 Nos	<p>Size: 6'X3'X2'6" Thickness: 36 mm; Height of the headboard should be minimum 85 cm from ground; Imperial teak finish; Termite and borer resistant material; Material: MDF; (a sample design for bed is attached for representation purpose only)</p> <p>Mattress as per size of the bed; At least 3" thick; The mattress should have anti-microbial fabric; bonded foam; reversible; The mattress should be provided with at least five years warranty;</p> <p>Pillow: Approx27"X18" size; shall have 100% breathable cotton fabric with siliconised hollow fibre. Brand: Sleep-well, Kurl-on, or equivalent;</p>

[Handwritten Signature]
27/12/14

3.	Bed side table/ Bed divider with wooden shelves	04 Nos	Size: 450mm(W) X 400mm(D)X450mm(H) One sliding drawer & one open space box (as shown in the diagram); Laminated particle board; Imperial teak finish; termite and borer resistant;
4.	Set of Study Table with one side drawer and Chair	10 Nos	Size: Approx 900mm(W)X450mm(D)X720mm(H) Two drawer on the right side; Laminated particle board; Imperial teak finish; Thickness: Minimum 1" thickness; termite and borer resistant. Chair: hardwood chair with height as per the study table; with arm rest; with fixed cushion on seat as well as back; Imperial teak finish; termite and borer resistant.
5.	Wardrobe (Three door closet)	2 nos	Size: Approx 1450mm(W) X 600mm(D) X 2050mm(H) Three door closet; Laminated particle board; Imperial teak finish; Thickness: Minimum 1" thickness; termite and borer resistant. The space inside should be partitioned as per the drawing provided.
6.	Wardrobe (Two door closet): 4 Nos	4 Nos	Size: Approx 800mm(W) X 600mm(D) X 1800mm(H) Two door closet; Laminated particle board; Imperial teak finish; Thickness: Minimum 1" thickness; termite and borer resistant; Upper half partition should be for hanging clothes and lower space is to divided into two shelves of equal dimensions.
6.	Centre table with a set of chairs	08Nos	Center table with standard size approx 3' X 1.5' X 1.5'(H) Laminated particle board; Imperial teak finish; glass top (Glass top within the board frame); with a platform at lower level as shown in the drawing.; termite and borer resistant;
8.	Sofa set One Set constitutes: 1. One seater sofa: 2 Nos 2. Three seater sofa:	02 Sets	3+1+1 Seater Latherite material; Frame material should be laminated particle board. It should be chemically treated to avoid any kind of bend and crack; it shall be termite and borer resistant;

	1 No.		
9.	Pelmet for windows and doors 1. 4'5" : 16 Nos 2. 3' : 6 Nos	16 Nos and 06 Nos	Laminated particle board; Imperial teak finish; termite and borer resistant; the width of pelmet should be 6 inches; Price may be quoted as running feet.
10.	Dressing Table with dressing stool	06 Nos	Size: approx 600mm(W) X 450mm (D) X 1800mm (H) Laminated particle board; Imperial teak finish; two drawers; Mirror length should be at least 4' and width at least 1.5'; a sample design for representation purpose is enclosed.
11.	Six user dining table with six chairs	03 Sets	Dining Table Height: Approx 30 inches (75 cm), Length: 63 inches (158 cm), Width: 35 inches (88 cm) Dining Chair Height: Approx 41 inches (103 cm), Length: 17.7 inches (44 cm), Width: 17.7 inches (44 cm) Material: Solid Wood (Sheesham Wood) And Fabric Imperial teak finish Table Top Material: Solid Wood Frame Material: Solid Wood Upholstery Material: Fabric Quantity: 7 Pieces (1 Dining Table + 6 Dining Chairs) each set (sample diagram enclosed)
12.	Computer Table	02 Nos	Size: Approx 2'(W) X 4' (L) X 2.5' (H) Laminated particle board; termite and borer resistant; Imperial teak finish; sliding panel for keyboard; separate space/ cabinet for UPS, CPU and Printer/Scanner in the table; Chair: Revolving chair with adjustable height; arm rest; with foam and fabric on the seat and back;
13.	Frosted Bathroom Door	02 Nos	8 mm thick toughened frosted glass door for door size of 2'10" X 6'8"

[Handwritten Signature]
21/12/14

B) Electronic items:

S. No.	Item Name	Quantity	Particulars/ Specifications
1.	Refrigerator with stabilizer	02 Nos	90 liter capacity Stablizer 1 KVA (Voltage Range: 90-230 V)
2.	Television	06 Nos	Screen Size: 32" LED/ Flat Screen/ Full HD/ HDMI Port Wall Mount Kit
3.	Television	01 Nos	Screen Size: 40" LED/ Flat Screen/ Full HD/ HDMI Port Wall Mount Kit
4.	Air Conditioner with stablizer	03 Nos	Split AC 1.5 Ton capacity Stablizer: 5 KVA (Voltage Range: 90-230 V)
5.	Blowers	02 Nos	Quartz Rod heater of 1200 Watt, portable, facility of oscillation
6.	Geysers	04 Nos	Vertical Mounting; should be a able to withstand water pressure from overhead tank located at least 25feet above; Anodic, hard water protection; Minimum 15lt capacity; thermal insulation; with temperature indicator.
7.	Automatic Shoe Cleaner	01 No.	Shoe Shiner, sole cleaner; two brushes – brown & black.
8.	Computer Set (Desktops)	02 Nos.	Processor – i7; RAM 8 GB; Hard Disk: 1TB; Monitor: LED backlit, 18.5 Inch, with keyboard, mouse and 1KVA UPS;
9.	Printer	01 No.	Duplex printer with scanner
10.	Fly Insect killer	01 Nos.	Portable; capable of both Wall Mount and free standing; at least two lamps of minimum 8000 hours lamp life; effective against flies, ants, bugs, cockroaches, etc.
11.	Water Cooler with RO Filter	02 Nos.	40 litre hot and cold water dispenser with hot/ normal/ cold modes; Body -

FINANCIAL BID
COMMERCIAL BID FORMAT

Vendors shall quote all inclusive of prices (i.e. price inclusive of all taxes, transportation and all other expenses for delivery and installation per item)

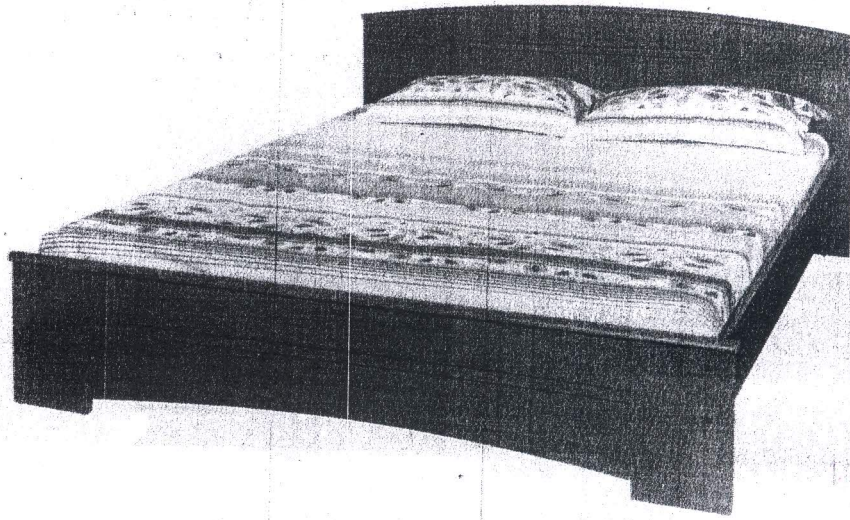
SI.No.	Name of the item	Quantity	Unit rate	Total (Amount in figures)	Total (Amount in words)
1	Double Bed with Mattress and Pillow	02 Nos			
2	Single bed with Mattress and Pillow	08 Nos			
3	Bed side table/ Bed divider with wooden shelves	04 Nos			
4	Set of Study Table with one side drawer and Chair	10 Nos			
5	Wardrobe (Three door closet)	2 nos			
6	Wardrobe (Two door closet): 4 Nos	4 Nos			
7	Centre table with a set of chairs	08Nos			
8	Sofa set One Set constitutes: 1. One seater sofa: 2 Nos 2. Three seater sofa: 1 No.	02 Sets			
9	Pelmet for windows and doors 1. 4'5" : 16 Nos 2. 3' : 6 Nos	16 Nos and 06 Nos			
10	Dressing Table with dressing stool	06 Nos			
11.	Six user dining table with six chairs	03 Sets			
12	Computer Table	02 Nos			
13	Frosted Bathroom Door	02 Nos			

[Signature]
27/12/14

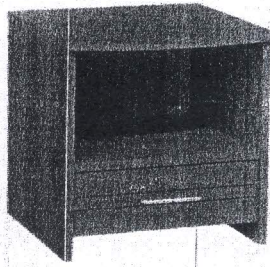
B) Electronic items:

S. No.	Name of the item	Quantity	Unit rate	Total (Amount in figures)	Total (Amount in words)
1.	Refrigerator with stabilizer	02 Nos			
2.	Television	06 Nos			
3.	Television	01 Nos			
4.	Air Conditioner with stabilizer	03 Nos			
5.	Blowers	02 Nos			
6.	Geysers	04 Nos			
7.	Automatic Shoe Cleaner	01 No.			
8.	Computer Set (Desktops)	02 Nos.			
9.	Printer	01 No.			
10.	Fly Insect killer	01 Nos.			
11.	Water Cooler with RO Filter	02 Nos.			

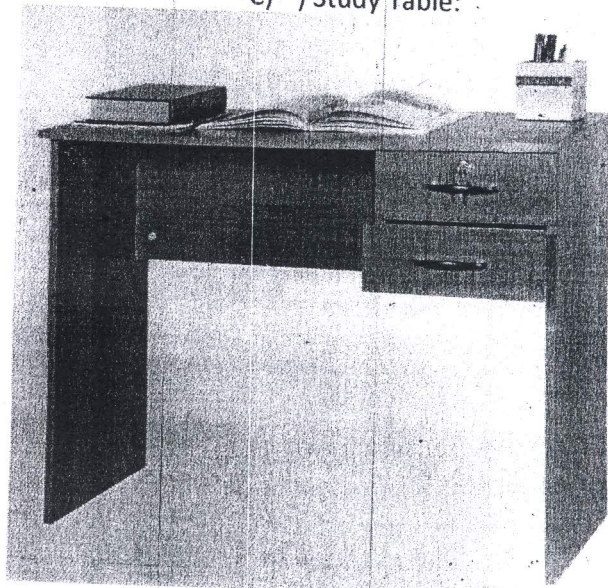
A) sample image for bed:



B) Bed divider/bed side table:

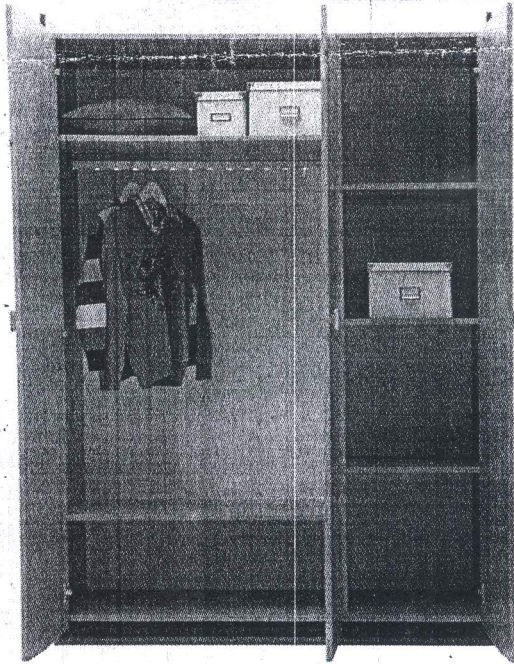


C) Study Table:

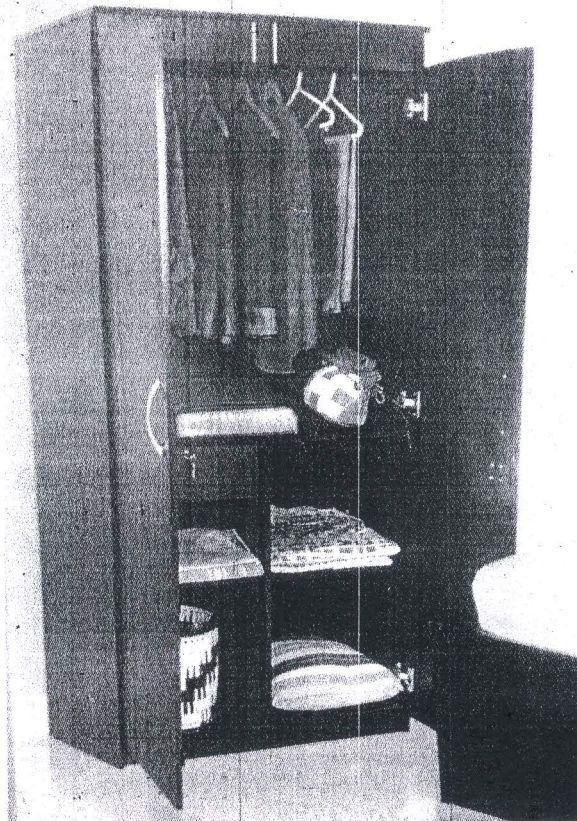


D) Three Closet Wardrobe:

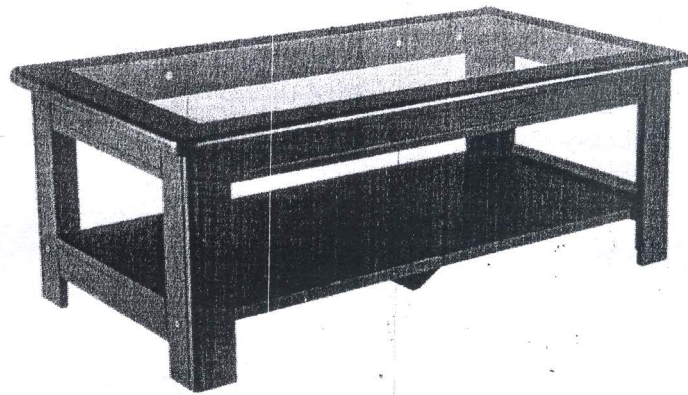
Handwritten signature
21/12/16



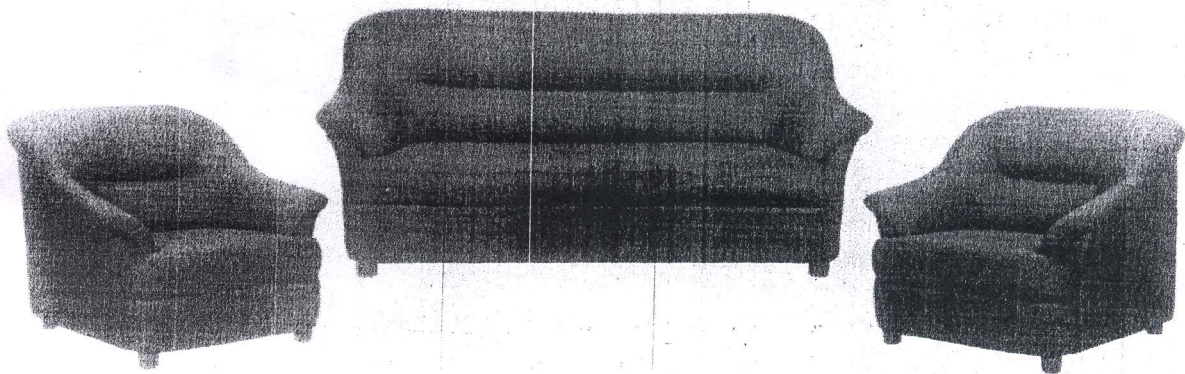
E) Two door closet (Wardrobe)



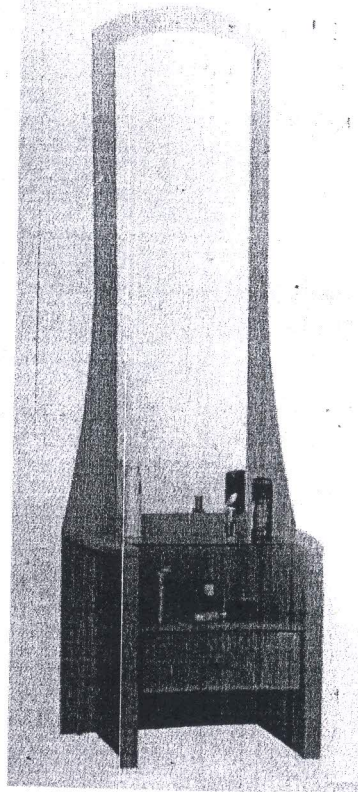
F) Center Table with a set of chairs



G) Sofa set:



H) Dressing Table:

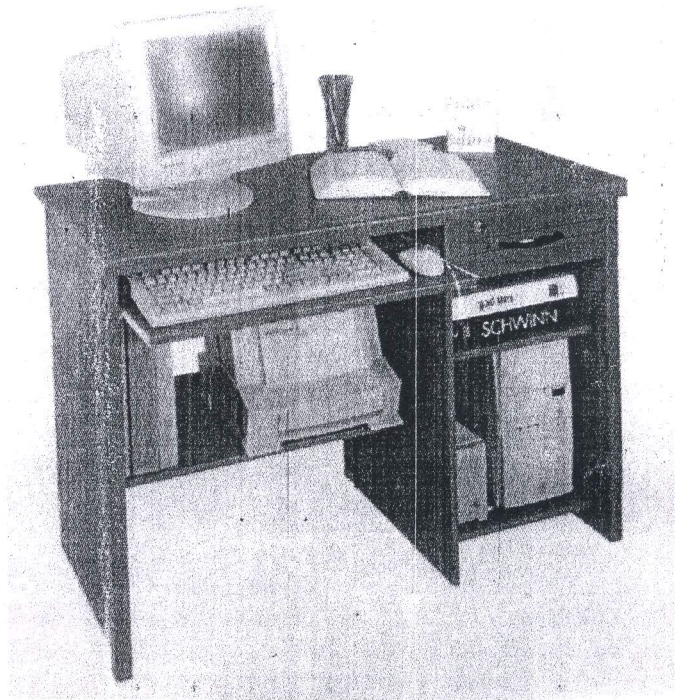


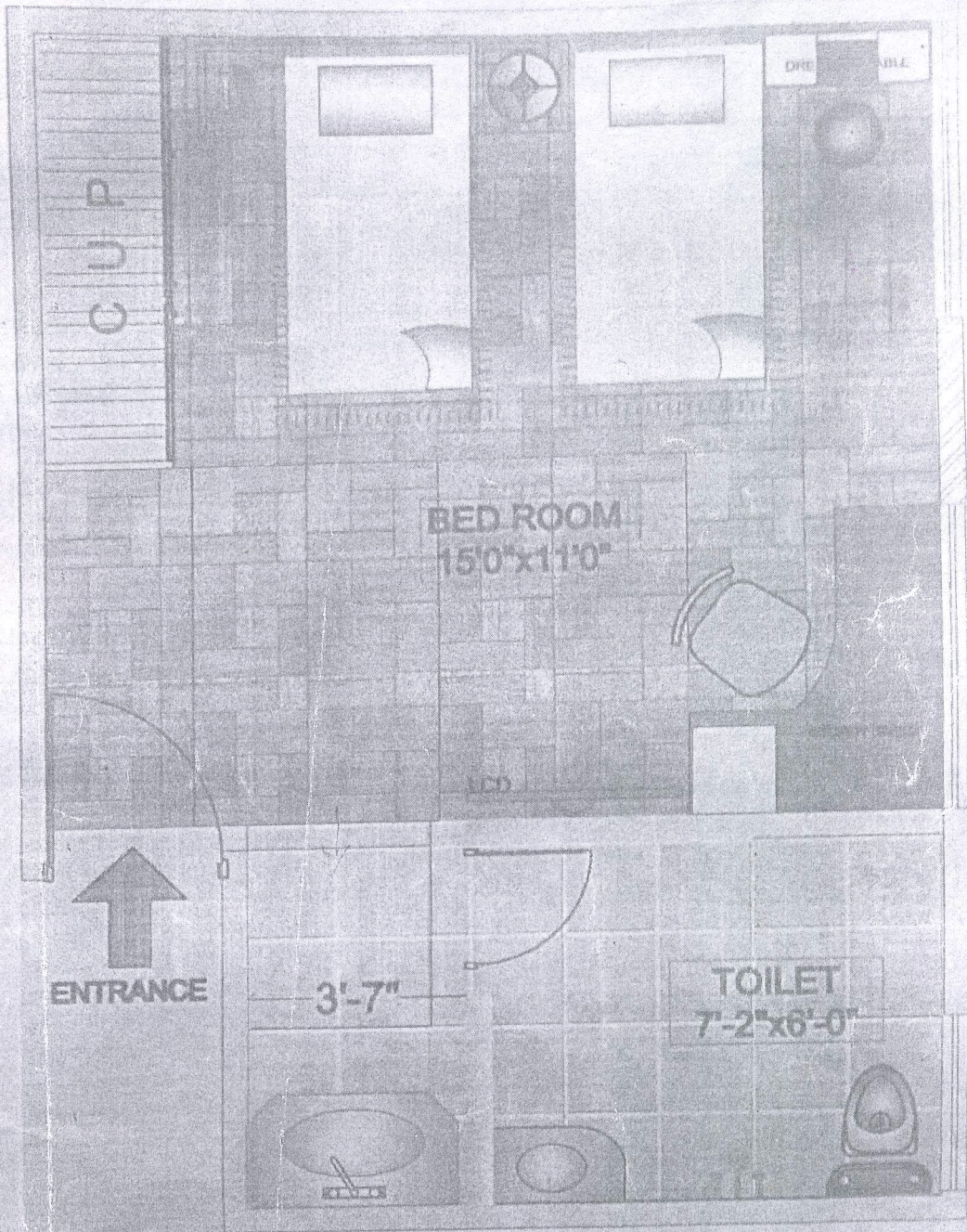
Handwritten signature
21/12/11

I) Dining Table:



J) Computer table:





av. 2

Handwritten signature

